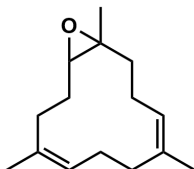


Romoxyde



Olfactive Description

Woody Cedarwood, amber, patchouli

Olfactive Family

Woody

Usage Recommendations

This dry woody note fits in with all kinds of fragrances, from floral in traces to strong woody accords in relatively high dosage. It gives strength to other woody materials, but also to floral accords like jasmin, tuberose, and carnation. The dryness improves also the aldehydic as well as the green part of fragrances. Used in oriental fragrances, the ambery aspect of this material built a good combination with musks.

Dosage Recommendations

The dosage varies from traces up to 10%

Renewable Carbon Content

-

Food Grade

No

Use In Fragrance

Yes

C.A.S.#

71735-79-0

Flavis

-

FEMA

-

REACH

Exempt

Appearance

Colorless to pale yellow clear oily liquid.

Tenacity On Blotter

About 1 month.